

World Wide Web Weaver For Macintosh 1.1

Supplemental

The following changes have been made to World Wide Web Weaver for Macintosh 1.1 since the release of version 1.0.

Fixes

Selecting File In Tag Editors Can Return An Upward Path

When using the 'Select File' option in the graphic, link, & form editors, World Wide Web Weaver now can return paths that lead to any file on the same volume as your current document not just to files in the same folder or sub directories.

Removed Extra Invisible Characters In Comment Tag

In version 1.0 there was an extra invisible character (ascii code 0) in the tag for comments (but not the auto-entered comments). This extra character has been removed. To fix any old documents that might contain this extra character, use the Scan For Illegal Characters option under the Tools menu to search for and delete this character.

Fixed Saving Over Current Document

A problem with not allowing the saving over the current document with the 'Save As...' option is now fixed.

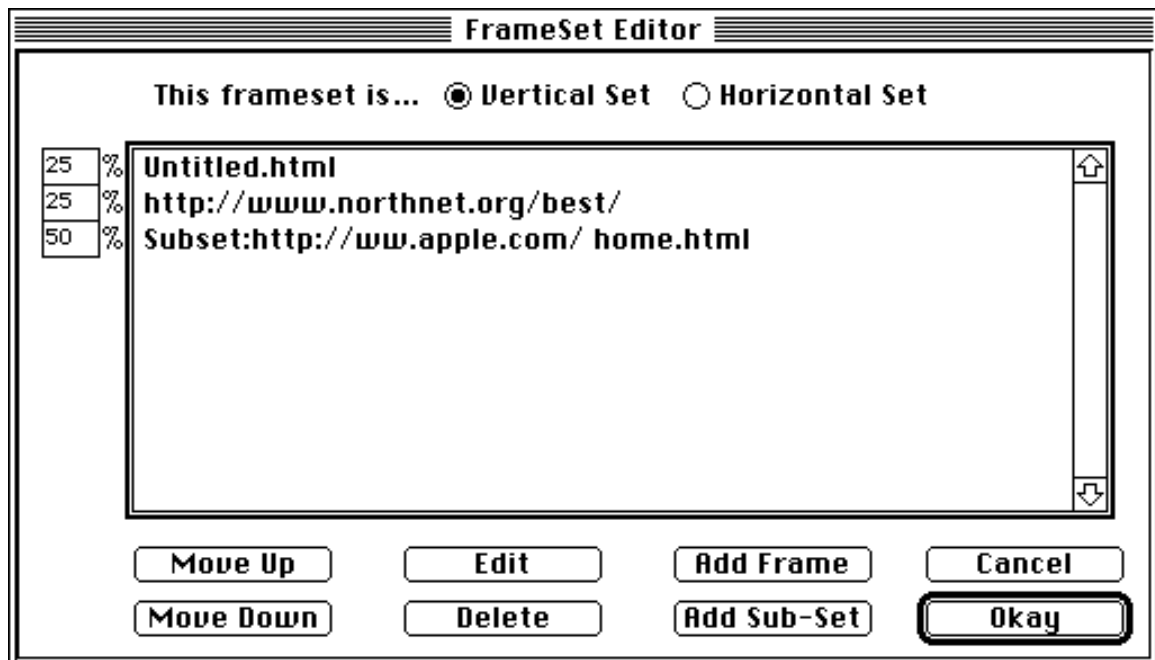
Improved Scanning For Tags

The scanning for tags function has been greatly improved. Though none of the changes are visible, World Wide Web Weaver should handle scanning for tags better and require less memory when doing so than in 1.0. These changes have also fixed some bugs that could cause random crashes when scanning for tags on some machines.

New Features

Frames

Under the Tags menu (and on the toolbar) is a new frameset editor for creating frames (new with Netscape 2.0) Improved Font Editor The options for old and italic styles are now available in the font editor.



Vertical Set or Horizontal Set

Use this radio set to select if you are creating a frameset of vertical columns or horizontal rows.

Frame Percentage

Used to enter the percentage of the window the frame will take up (vertically or horizontally, depending on what you have selected).

Move Up

Used to move the selected frame up.

Move Down

Used to move the selected frame down.

Edit

Allows you re-edit the selected frame.

Delete

Deletes the selected frame.

Add Frame

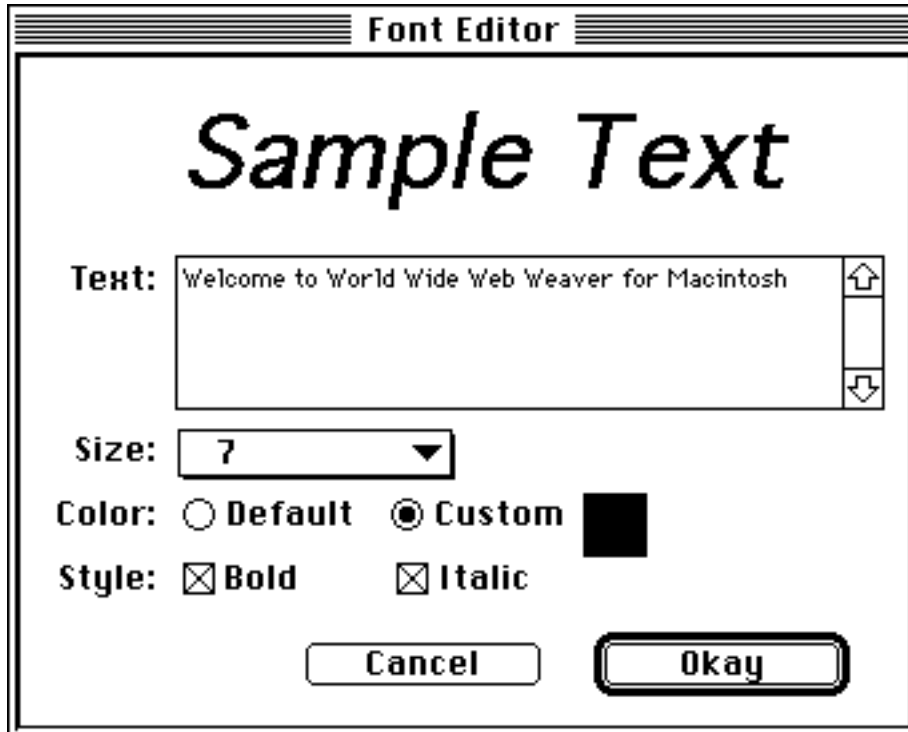
Allows you to add a frame containing either a full URL or a relative path.

Add Sub-Set

Allows you to create a sub-frameset. This is how you can have both vertical columns and horizontal rows of frames

Font Editor

Under the Tags menu (and on the toolbar) is a new font editor for using the font size and font color tags(new with Netscape 2.0).



Text

This is where you type the text you wish to edit/display.

Size

Select the font size (size 1 being the smallest) you wish to use from this pop-up menu.

Color

Use this radio set to select what color you want your text.

Style

Though the bold and italic tags are not actually apart of the font tag they have been included here as a convenience. Simply select the bold or italic tags if you want your text to be marked to be displayed in bold or italic.

Support For Multiple Preview Browsers

Under the Tools menu is a new option 'Extra Preview Helps' which lists up to ten different preview helpers (usually web browsers) in which you can preview your documents with simply by selecting one from the menu. To add items to the list simply place an alias to any preview helper in the folder 'Extra Preview Helpers' which is in the 'HTML Extensions' folder.

Option In Preferences Window To Turn Off Text Styling Of Tags

In the preferences window has been added a check box to turn on and off the use of styled text for tags.

Option In Preferences Window To Set The Default Font And Font Size

In the preferences window has been added options to select the default font and font size to use for your documents.

Remove Tags

Under the Tool menu has been added a new 'Remove Tags' option. When selected all tags will be removed from the selected text. If no text is selected then all tags in the current document are removed. This option also works great to preview your document without tags and then use the Undo option from under the Edit menu to bring back the tags.

New Locations For HTML Extensions Folder

The HTML Extensions folder can now be in two new locations, Web Weaver Settings *f* (located in the preferences folder) and in the System Folder. This can prove to be quite handy when sharing the same copy of World Wide Web Weaver with others on a server, allowing each user to have his or her own customized simple tags. World Wide Web Weaver searches for the HTML Extensions folder in the following order...

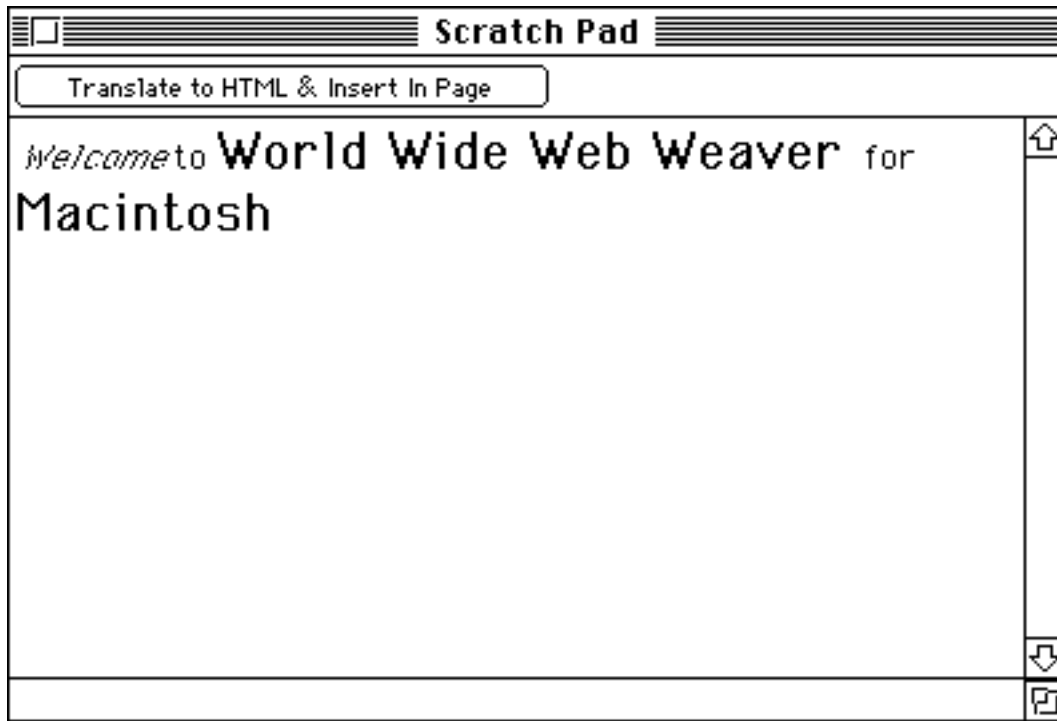
1. System Folder
2. Web Weaver Settings folder
3. Same folder that the World Wide Web Weaver application resides

Convert Plain & Styled Text To HTML

Under the Edit menu is an option 'Paste as HTML'. When selected, the text (or styled text) in the clipboard is translated to HTML and inserted in the current page. If the clipboard contained plain text then the appropriate line breaks and paragraph breaks tags are added. If the clipboard contains styled text (ie. Anything you can type in SimpleText) the bold, italic, font size, and font size tags are also added. This allows you to type in a truly WYSIWYG manner and have World Wide Web Weaver translate it to HTML for you.

Scratch Pad Window

A scratch pad window has been added. A scratch pad window contains a text field whose contents are saved between sessions. The idea is very similar to the Mac's Note Pad desk accessory except that you can use styled text (multiple fonts, sizes, styles, & colors) and you have the option of having World Wide Web Weaver translate the selected text in the scratch pad to HTML and inserting it into the current document. If no text is selected then all text in the scratch pad is translated and inserted.



Set Text To Default Style When Typing

In the Preferences window is a check box to enable or disable styled text when typing. Note: This has no effect on how tags are displayed.

Tag Validity Verification

World Wide Web Weaver can optionally scan your documents for valid tags. Though this process is not much better than a spell checker it does not limit you from using new tags as then are defined by new HTML standards. It also allows you to teach World Wide Web Weaver new tags (much like to can add words to most spell checkers). You can set this feature to automatically scan your documents when closing them (see the the option in the preferences window) or you can manually scan using the Scan For Valid Tags from under the Tags menu.

Scanning For Illegal Characters

Under the Tools menu is an option to Scan For Illegal Characters. This option scans your documents for characters that would be illegal in HTML, 8 bit characters and a few 7 bit characters.

Improve Find/Replace Functions

The find and replace functions have been improved allowing wrap around searches and easy access to the find again, find again & replace, and replace all functions.

Customizable Time And Date Formats

The time and date insertion options are now customizable to allow different formats of the date and time.

Auto-Scanning For Tags While Idle

World Wide Web Weaver now scans your documents every time you pause to re-label tags. Note: In order not to slow you down and limit the visual changes this feature only re-labels tags and not the text effected by tags as the 'Scan For Tags' option under the Tools menu does.